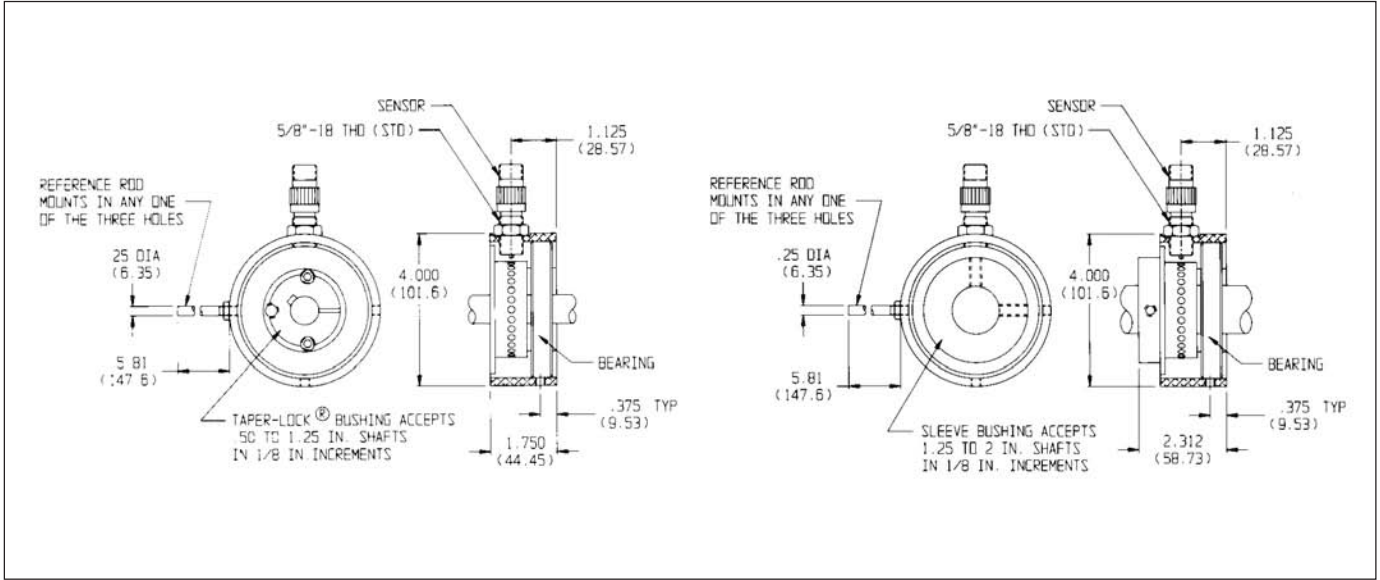
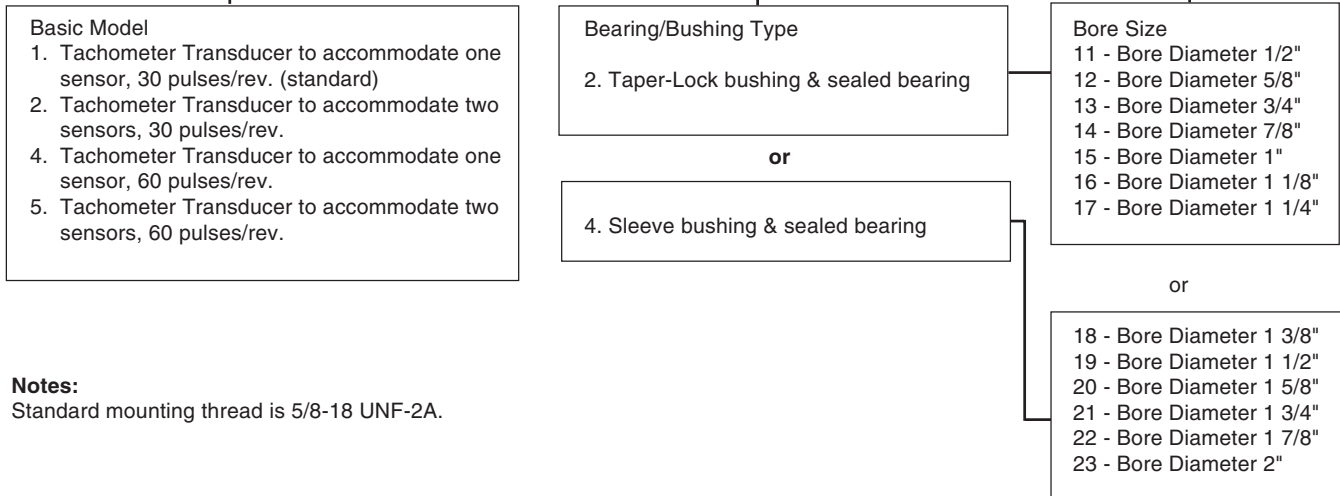


## Ease of Installation



## Ordering Map

**T79850-103-**



## Ordering Procedure

**Example:** Speed indicating system for a variable speed motor, 0 - 1750 RPM, 1" shaft diameter, panel-mount display within 10 ft., min. motor speed is 175 RPM.

- Select Model No. **T79850 - 103 - 1215**  
 30 PPR, std. basic model      
 Taper-lock, sealed bearing   1" bore dia.

- Select a speed sensor such as P/N 70085-1010-001
- Select a cable assembly, P/N CA79860-01-00, to complement (2).
- Select tachometer to meet application needs.

**Dimensions in inches and (mm).**